



PRODUCT CATALOGUE



B | E | S
HEALTHCARE

0117 966 6761
info@beshealthcare.net
www.beshealthcare.net





CONTENTS



BES HEALTHCARE CONTACT

131 South Liberty Lane
Ashton Vale
Bristol
BS3 2SZ

01179 666 761

info@beshealthcare.net

UNILINK

Head

- 06 Unilink Kit
- 08 Comfort Plus
- 09 Flip Down (FDM)
Hardware
- 10 Ultra Hardware
- 12 Ultra Pads
- 14 i2i
- 16 Fixed Hardware



Trunk

- 17 Standard Swing Away
- 20 Trunk Support

Pelvic

- 22 Pelvic Support
- 25 Cane Mounts

Upper Extremity

- 28 Elbow Stop Support
- 31 Lateral Pads

STEALTH CUSHIONS

- 34 End to End Cushion Solutions
- 36 Skin Protection
- 44 Back Supports
- 46 Back Cushions

MOUNTING

- 50 i-Drive® Control Harness





CONTENTS

Head

- 06 Unilink Kit
- 08 Comfort Plus
- 09 Flip Down (FDM)
Hardware
- 10 Ultra Hardware
- 12 Ultra Pads
- 14 i2i
- 16 Fixed Hardware

Trunk

- 17 Standard Swing Away
- 20 Trunk Support

Pelvic

- 22 Pelvic Support
- 25 Cane Mounts

Upper Extremity

- 28 Elbow Stop Support
- 31 Lateral Pads

UniLink



UniLink **HEAD** SOLUTIONS

REVOLUTIONARY MOUNTING SYSTEM

Hence its brand name, the UniLink simplifies the component system by using one link configuration for everything. Every part integrates perfectly with one another giving the opportunity to better understand it, apply it and consider it for other implementations. Either as a pelvic solution or any other solution, each of its components are interchangeable.



We have many other solutions that can be tackled with UniLink. For example, the UniLink Kit will come with one of each pre-assemblies as well as a tackle box of spare parts.

This kit is designed so that using the parts inside, one could build unique components or repair damaged items.

UniLink

Tankie One Items

ASSESSMENT

PRE-CONFIGURED ORCH PRICE ITEMS



2/ **1.5**
Links
in

2/ **Double Slotted Plates**

4/ **Link Clips**

2/ **Single Slotted Plates**

2/ **17**
Split
Rings
mm

2/ **17**
Ball
Links
mm

4/ **M5**
Ratchet
Handle
Screws

2/ **1**
Joint
Links
in

2/ **90**
Offset
Links

2/ **Seat Track Receivers**

2/ **90**
Mounting
Bracket

2/ **FSC**
Pad
Mounts

1/ **1**
Single Track
in
Nuts Mount
Left

1/ **1**
Single Track
in
Nuts Mount
Right

2/ **1**
Cone
Mounts
in

12/ **M5** Flat Washers
12/ **M5** 4mm Slotted Head Stoppers

1/ **Medium Common Plus Headrest Pad**
mount

1/ **Left Lateral Hardware**

1/ **Right Lateral Hardware**

2/ **Mount Ankle Pelvic/Thigh Support Hardware**

2/ **Standard Pelvic/Thigh Support Hardware**

2/ **4in x 6in Pelvic/Thigh Support Pad**

1/ **Right Elbow Stop**

1/ **Left Elbow Stop**

2/ **Flat Lateral Pad**

2/ **4in x 4in Elbow Stop Pad**





UniLink HEAD SOLUTIONS

COMFORT PLUS

The Comfort Plus is a single pad head-support made for comfort and ease of use. Designed to: Supply a resting position or support against gravity in tilt or recline. Add a surface behind the head during automotive transportation. Easily accommodate the addition of positioning components and accessories to provide additional clinical interventions. Simply allow additional lateral support pads and switches that are easily configurable as needs change. To discourage hooking of the head behind the pad, the CP19CCFPM 19in. (482mm) pad offers oversized support.

CP06CCFPM

Comfort Plus Niño (Paediatric) 6in(15.24cm) 17mm Ball Metric Contour Head pad - Actual dimensions 6 1/4in(15.87cm) wide x 4 1/4in(10.76cm) tall bar

CP08CCFPM

Comfort Plus 8in(20.32cm) 17mm Ball Metric Contour Head pad - Actual dimensions 9 9/16in(24.25cm) wide x 5 3/4in(14.60cm) taller

CP10CCFPM

Comfort Plus 10in(25.40cm) 17mm Ball Metric Contour Head pad - Actual dimensions 11 7/32in(28.51cm) wide x 5 3/4in(14.60cm) taller



CP14CCFPM

Comfort Plus 14in(35.56cm) 17mm Ball Metric Contour Head pad - Actual dimensions 14 5/32in(35.94cm) wide x 5 3/4in(14.60cm) tall



CP19CCFPM

Comfort Plus 19in(48.26cm) 17mm Ball Metric Contour Head pad - Actual dimensions 19 1/2in(49.53cm) wide x 5 1/8in(13.01cm) taller

FIXED & FLIP-DOWN HARDWARE

Unlink Head Solutions Flip-Down (FDM) Hardware comes in two variations.

Both variations have 7 1/2in (19.05cm) of height adjustment travel in the stave.

Packages will include split ring, SMB and spacer, as well as metric and SAE fasteners.

UHB2D232FD

FDM Hardware with 7in (17.78cm) height adjustment, 1/2in (12.70mm) sq. area stave.

UHB3D232FD

FDM Hardware with 12in (30.48cm) height adjustment, 15mm sq. area.



ADDITIONAL LINKS

UILNK150

1 1/2in (3.81cm)



UILNK200

2in (5.08cm)



UILNK300

3in (7.62cm)





UniLink HEAD SOLUTIONS

ULTRA HARDWARE

The UniLink Ultra hardware uses two components to create the desired system. The Ultra Link Set & QCR Staves.

UniLink Ultra Link Set

This hardware will create a system that utilizes two separate pads to cradle the occipital and sub-occipital regions of the head independently. The horizontal bar uses a new clamp style that increases the holding strength and eliminates the potential of damage to the square tube. Both pad mounts will include a split ring and screws.

UHBSU23200

This hardware will create a system that utilizes two separate pads to cradle the occipital and sub-occipital and is compact enough to fit both paediatrics and adults.



ULTRA HARDWARE

QCR Stave Hardware

There are several versions based on Fixed and Flip-Down Hardware. Both variations will have 7 1/2in (19.05cm) of vertical travel in the stave. Packages will include SMB and spacer, as well as metric and SAE fasteners.

Fixed Hardware

UHB2D33200-QCR

QCR Fixed Hardware with 7in (17.78cm) height adjustment, 1/2in (12.70mm) vertical bar

UHB3D33200-QCR

QCR Fixed Hardware with 12in (30.48cm) height adjustment, 15mm vertical bar

UHB4D33200-QCR

QCR Fixed Hardware with 12in (30.48cm) height adjustment, 1/2in (12.70mm) vertical bar

The hardware will include SBM and both metric and SAE

Flip-Down (FDM) Hardware

UHB2D232FD-QCR

QCR FDM Hardware with 7in (17.78cm) height adjustment, 1/2in (12.70mm) sq. area stave.

UHB3D232FD-QCR

QCR FDM Hardware with 12in (30.48cm) height adjustment, 15mm sq. area





UniLink HEAD SOLUTIONS

ULTRA PADS

The UniLink Ultra Link Head Support supplies solutions to the most clinically challenging positioning issues. The Ultra Link utilizes two support surfaces in combination with their unique adjustment capabilities and supplies maximum occipital and proximal lateral cervical support. The Ultra (combined with UniLink) allows adjustment to asymmetrical postures and deformities. This system is designed to: Independently support the occipital and sub-occipital regions. Supply anterior, posterior, rotational, and angle adjustment of both pads independently. Easily accommodate the addition of positioning components and accessories to provide additional clinical interventions.

Occipital Pads



530M
Curved 4x2
4 x 2 1/2in
(10.16cm x
6.35cm)



520M
Curved 4x3
4in x 3 1/4in
(10.16cm x
7.62cm)



510M
Flat 5x2
5in x 2in
(12.70cm x
5.08cm)



500M
Curved 7x4
7 1/4in x
4 1/4in
(18.42cm x
10.80cm)



ULTRA PADS

The UniLink Ultra provides occipital and sub-occipital support, which can be adjusted independently from each other. The Occipital Pad provides a more traditional support to the occipital (back of the head). The sub-occipital Pad is positioned right between the back of the head and the top back portion of the neck.

This set up provides extra support and positioning for individuals with limited neck control. For a more complex positioning solution the Ultra hardware can be equipped with the i2i upper torso system as the sub-occipital support for individuals with little to no neck control.

Sub-occipital Pads



610M
Curved 4x2
4 x 21/2in
(10.16cm x
6.35cm)



600M
Curved 4x3
4in x 31/4in
(10.16cm x
7.62cm)



620M
Flat 5x2
5in x 2in
(12.70cm x
5.08cm)





UniLink HEAD SOLUTIONS

i2i

The unique, integrated shape of the i2i provides a maximal, proximal foundation between the head, neck, and shoulders. The sub-occipital along with the integrated low profile occipital components provide posterior support and limit cervical extension while offering resting support.

The lateral components promote a mid-line head position and offer cervical supporting while maintaining range of motion. Anterior stabilizer arms act as an anchor for the chin prompt, and provide an anterior boundary channelling movement into a mid-line position.

The i2i comes in two profiles and five sizes, with adjustable or fixed arms. (See prescription form for more details).

i2i PAEDIATRIC

Max neck width
3in to 3 1/2in (8 to 9cm)

i2i SMALL

Max neck width
4in (10cm)

i2i MEDIUM

Max neck width
4.5in (11cm)

i2i LARGE

Max neck width
5in (13cm)

i2i X-LARGE

Max neck width
5.75in (14cm)



SWING AWAY

Varied systems offer attachment points for support surfaces and switch access.

Swing-away rods adjust in angle, rotation, and length. Rods swing out of the way 100° for transfer, therapy, and when not needed.

Adjustable pads block lateral flexion, rotation, and provide a surface for support. Rods swing back into place without losing their position.



Using a head support is part of a complete seating intervention and should be informed by the findings of a seating assessment so each individual's needs can be met. For safety, the chin prompt should ONLY be used under a caregivers supervision, and is NOT to be used during transportation.



UniLink **HEAD** SOLUTIONS

FIXED HARDWARE

UHB2D33200

UniLink Head Solutions Hardware
7in, 1/2in Square Vertical Bar



UHB3D33200

UniLink Head Solutions Hardware
12in, 15mm Square Vertical Bar



UHB4D33200

UniLink Head Solutions Hardware
12in, 1/2in Square Vertical Bar

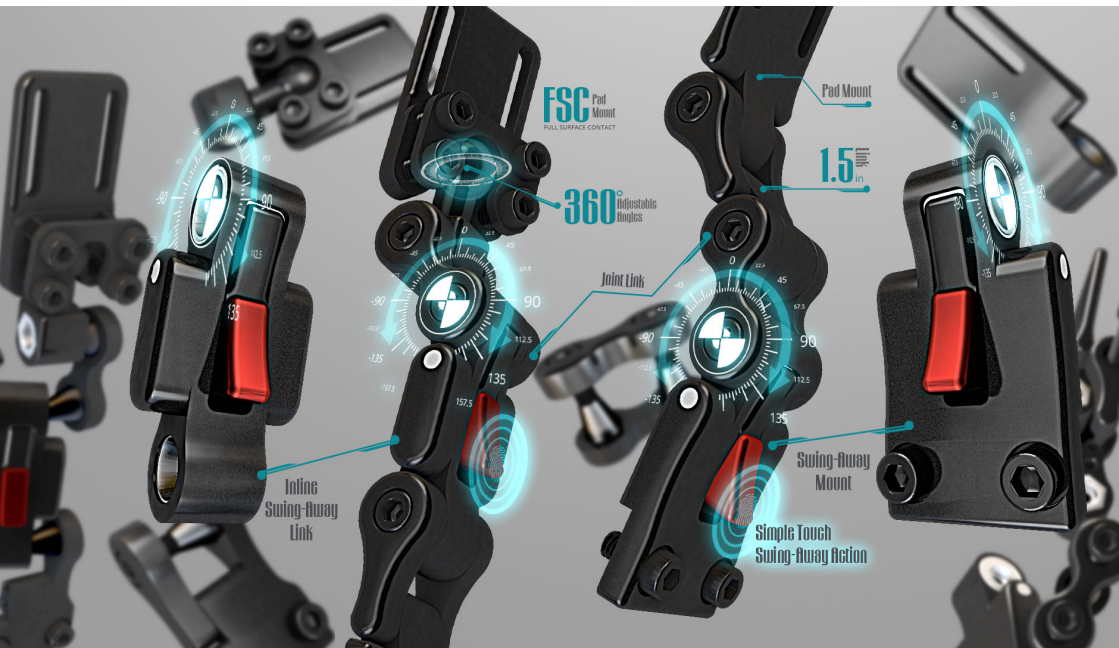


UNILINK TRUNK SOLUTIONS

TRUNK SUPPORT

UniLink Trunk Support Solutions are a highly adjustable thoracic lateral support. They are used to help increase the user's stability and balance while in the chair. Also can serve as a tactile reminder or to correct flexible lateral trunk flexion.

This may help maintain the user in a functional position which prevents further postural decay while diminishing the need for repetitive repositioning of the user during the day.





UniLink TRUNK SOLUTIONS

Standard (Swing-Away)

Swing-Away to aid in Transfers and ADLs Remains fixed to the chair so that it is never misplaced. Add or remove links to achieve the perfect fit! Three points of adjustment in the standard configuration. Pad depth will also be adjustable!

Standard Swing Away



ULS25100-L
UniLink Swing
Away Lateral -
Left Side



ULS25100-R
UniLink Swing
Away Lateral -
Left Side



ULS2510F-L
UniLink Left
Swing-Away
Lateral Mount
Set for FSC*



ULS2510F-R
UniLink Right
Swing-Away
Lateral Mount
Set for FSC*

Short Swing-Away



ULS25000-L
UniLink Left
Short Swing-
Away Lateral



ULS25000-R
UniLink Right
Short Swing-
Away Lateral



ULS2500F-L
UniLink Left
Short Swing-
Away Lateral
Mount Set
for FSC*



ULS2500F-R
UniLink Right
Short Swing-
Away Lateral
Mount Set
for FSC*

Full Surface Contact (FSC)

Stealth Products are the only company to offer FSC. FSC for the pommel is essential for providing necessary pressure dispersement to asymmetrical individual. FSC Pommel combine articulating link hardware with 360° pad.

Inline Swing-Away



ULS05100-L
UniLink Left
In-Line Swing-Away Lateral



ULS25000-R
UniLink Right
Short Swing-Away Lateral



ULS0510F-L
UniLink Left Short
Swing-Away
Lateral Mount Set
for FSC*



ULS0510F-R
UniLink Right In-Line
Swing-Away
Lateral Mount
Set for FSC*

Fixed Short



ULS23200-L
UniLink
Left Short
Fixed Lateral
Hardware



ULS23200-R
UniLink
Right Short
Fixed Lateral
Hardware



ULS2320F-L
UniLink Left
Short Fixed
Lateral Hardware
for FSC Option*



ULS2320F-R
UniLink Right
Short Fixed
Lateral Hardware
for FSC Option*

Fixed Standard



ULS23210-L
UniLink Left
Fixed Lateral
Hardware



ULS23210-R
UniLink Right
Fixed Lateral
Hardware



ULS2321F-L
UniLink Left
Fixed Lateral
Hardware for
FSC Option*



ULS2321F-R
UniLink Right
Fixed Lateral
Hardware for
FSC Option*

*FSC Option - Do not include UIPFSI100 FSC Pad Mount



UniLink **TRUNK** SOLUTIONS

TRUNK SUPPORT

Thoracic Pads Options



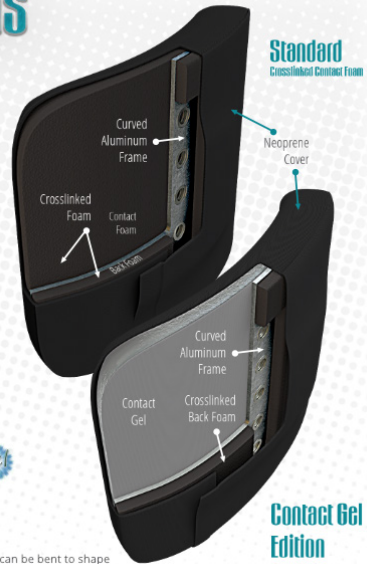
3in x 5in
7.62cm x 12.70cm
ULP535050320
ULP535057120



4in x 6in
10.16cm x 15.24cm
ULP546050320
ULP546057120



5in x 7in
10.16cm x 15.24cm
ULP557050320
ULP557057120



Standard
Crosslinked Contact Foam

Contact Gel
Edition

With enough pressure aluminum frame can be bent to shape

TRUNK SUPPORT LATERAL PADS

Thoracic pads come in both Standard and Gel options.

Standard Pads

ULP535050320

3x5 Lateral Pad,
Neoprene, 1" Spacing

ULP546050320

4x6 Lateral Pad,
Neoprene, 1" Spacing

ULP557050320

5x7 Lateral Pad,
Neoprene, 1" Spacing

Gel Pads

ULP535057120

3x5 Gel Lateral Pad,
Neoprene, 1" Spacing

ULP546057120

4x6 Gel Lateral Pad,
Neoprene, 1" Spacing

ULP557057120

5x7 Gel Lateral Pad,
Neoprene, 1" Spacing

Custom sizes available – Please contact Stealth Products



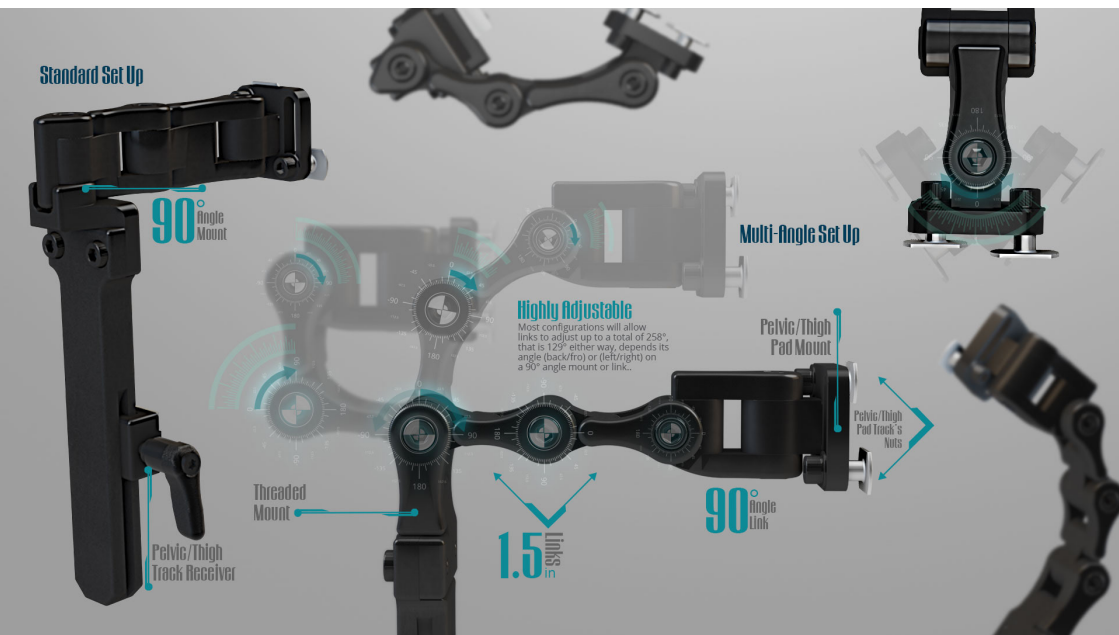
UniLink PELVIC SOLUTIONS

PELVIC SUPPORT

The UniLink Pelvic/Thigh Solutions is used to facilitate proper positioning of the seating area.

Can be used when the thighs are abducted or windswept and also aid in guiding the hips to a proper position.

The hardware allows for multiple points of adjustment to allow for a perfect fit.



UTT2311902-L

UniLink Left Fixed One Size and Adjustable Thigh Guide

UTT2311902-R

UniLink Right Fixed One Size and Adjustable Thigh Guide



UTT7A1260000

UniLink Thigh Guide Short 5in (12.70cm) height-adjustable and removable

UTT6A1260000

UniLink Thigh Guide Tall 7in (17.78cm) height-adjustable and removable

Order UT800000-Q Track Nut if required when using Thigh Guides.



UniLink PELVIC SOLUTIONS

PELVIC SUPPORT



UTT6A11602-L
UniLink Multi-Angle
Thigh Guide Long 7in
(17.78cm) Left Side



UTT6A11602-R
UniLink Multi-Angle
Thigh Guide Long 7in
(17.78cm) Right Side

*Order UT800000-Q Track Nut if required
when using Thigh Guides*



UTT7A11602-L
UniLink Multi-Angle
Thigh Guide Short 5in
(12.70cm) Left Side



UTT7A11602-R
UniLink Multi-Angle
Thigh Guide Short 5in
(12.70cm) Right Side

*Order UT800000-Q Track Nut if required
when using Thigh Guides*



UTS25100-L
UniLink Traditional
Left Flip Away
Thigh Guide



UTS25100-R
UniLink Traditional
Right Flip Away
Thigh Guide

CANE MOUNTS



UIMCNI340
UniLink Cane
mount 3/4in

UIMCNI780
UniLink Cane
mount 7/8in

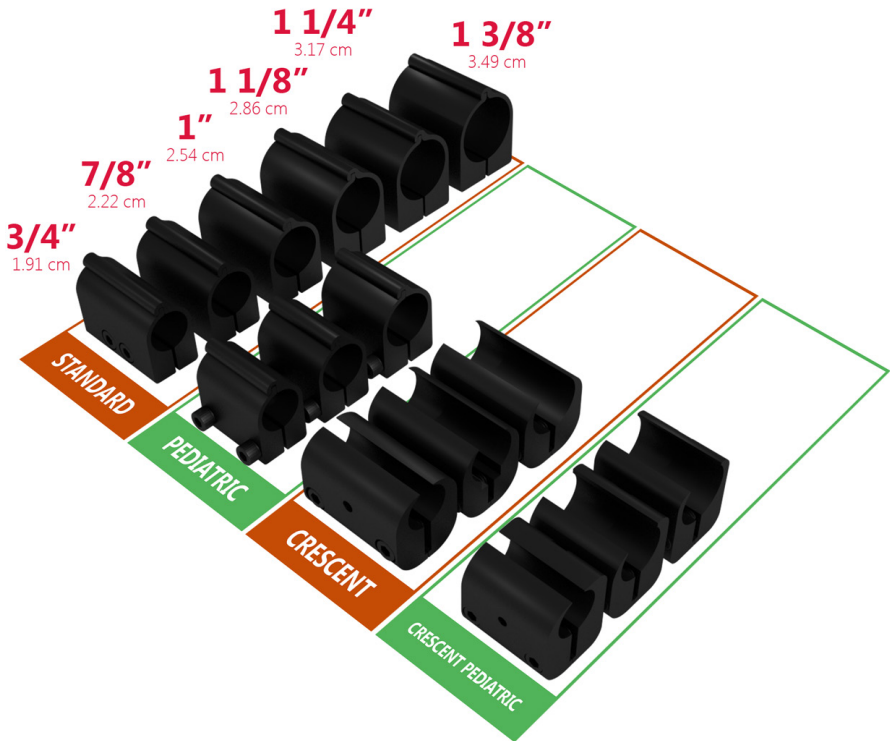
UIMCNI100
UniLink Cane
mount 1in



UniLink PELVIC SOLUTIONS

STEALTH CANE MOUNTS

Cane Mounts for Laterals (Thoracic or Pelvic) are made with black anodized aluminium: Strong and Reliable Easy to install Available for paediatric and standard hardware Size ranges between 3/4in. (1.91 cm) to 1 3/8in. (3.49 cm)



STANDARD MOUNTS



LPHW401
Lateral Pelvic 3/4in
Cane Mount (K0108)



LPHW402
Lateral Pelvic 7/8in
Cane Mount (K0108)

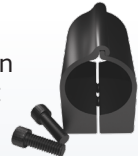


LPHW400
Lateral Pelvic 1in
Cane Mount (K0108)

LPHW412
Lateral Pelvic 1 1/8in
Cane Mount (K0108)



LPHW411
Lateral Pelvic 1 1/4in
Cane Clamp Mount
(K0108)



Niño (Paediatric) Solutions



LPNHW401
Niño Lateral Pelvic
3/4in Cane Mount
(K0108)



LPNHW402
Niño Lateral Pelvic
7/8in Cane Mount
(K0108)



LPNHW400
Niño Lateral Pelvic
1in Cane Mount
(K0108)



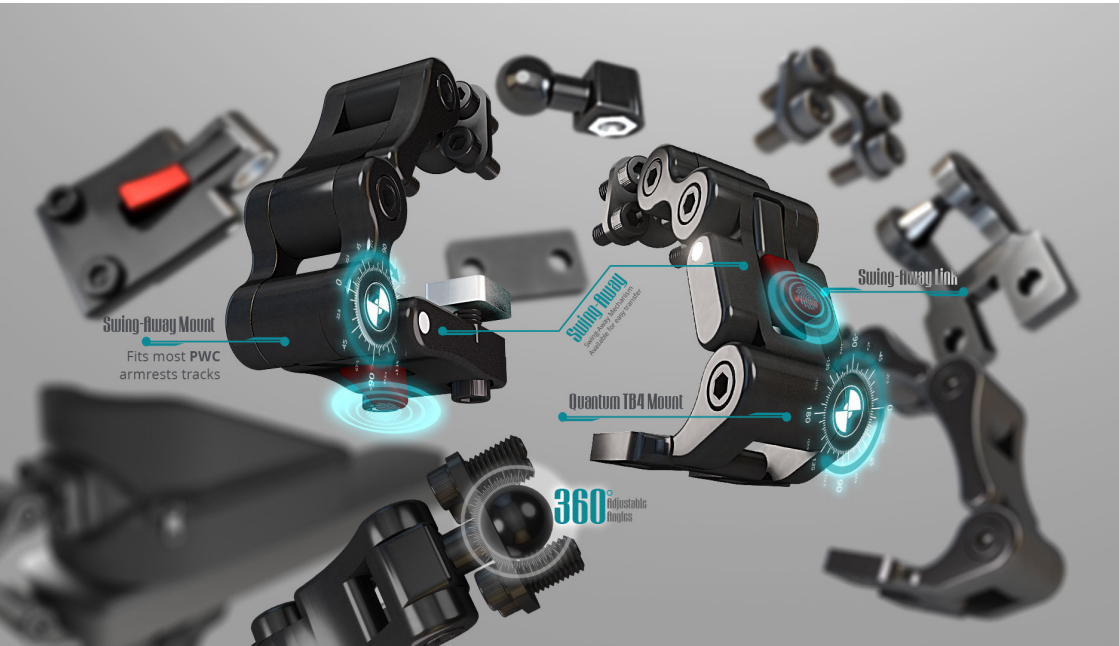
UniLink UPPER EXTREMITY

ELBOW STOP SUPPORT

Upper Extremities Support Solutions

Elbow supports first and foremost prevent the upper extremity (UE) from sliding back off of the arm-support during tilt operation. Also provide a positioning reference point posteriorly to allow caregivers & users to know where the UE should be positioned on the arm-support.

With a 3in (7.62cm) x 10in (25.40cm) pad elbow stops provide lateral support to keep the forearm positioned on the arm-support.



STANDARD LINK-SET

Fixed - does not swing away. This prevents unwanted or unintended swing away of the hardware. Add or remove links to achieve the perfect fit!

No Joint Link (double male) Three (3) points of adjustment in the standard configuration. Pad depth will also be adjustable!
FSC adjustment to better rotate pad to the End User's body shape.

Mounting Not Included for mounting hardware, see below.

UE000021F0

UniLink Fixed Elbow Block
Link Set, mount not included



Mounting Hardware

UniLink Elbow Stop Mounting Hardware available in different options.

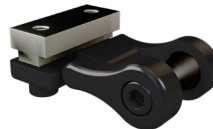
UESTDTRNFL

UniLink 1in(2.54cm) Left Elbow
Block Link Set Mount (Standard)



UESTDTRNFR

UniLink 1in(2.54cm) Right Elbow
Block Link Set Mount (Standard)



Other mounting hardware available, please contact Stealth Products.



UniLink UPPER EXTREMITY

ELBOW STOP SUPPORT

Swing-Away Link-Set

Swing-Away to aid in Transfers and ADLs Remains fixed to the chair so that it is never misplaced. Side Specific to maintain adjustment points accessible. You can only add links to achieve the perfect fit! Three (3) points of adjustment in the swing-away configuration. Pad depth will also be adjustable!

FSC adjustment to better rotate pad to the End User's body shape. Mounting Not Included you can select from multiple options, for example:

UESTDTRNF0 fixed mount with Standard Track Nuts.

UEPRMTRNF0 fixed mount with Permobil Corpus 3G Track Nuts.



UE000213SL
UniLink Flip Away Elbow
Block Link Set (Left),
mount not included

UE000213SR
UniLink Flip Away Elbow
Block Link Set (Right),
mount not included



Mounting Hardware

UniLink Elbow Stop Mounting Hardware available in different options.



UETB4MNTFL-Q
UniLink Fixed Elbow
Block Link Set Mount
for Flip-Back
Arm-support (Left)

UETB4MNTFR-Q
UniLink Fixed Elbow
Block Link Set Mount
for Flip-Back
Arm-support (Right)



Other mounting hardware available, please contact Stealth Products.

ELBOW STOP PADS



UEP533050320
UniLink
3in(7.62cm) x
3in(7.62cm)
Elbow Pad with
Neoprene cover
and Metric
Threads

UEP544050320
UniLink
4in(10.16cm) x
4in(10.16cm)
Elbow Pad with
Neoprene cover
and Metric
Threads

UEP53005032L
UniLink Left
3in(7.62cm) x
10in(25.40cm)
Elbow Pad with
Neoprene cover
and Metric
threads

UEP53005032R
UniLink Right
3in(7.62cm) x
10in(25.40cm)
Elbow Pad with
Neoprene cover
and Metric
threads

ELBOW STOP PADS WITH GEL



UEP533057120
UniLink
3in(7.62cm) x
3in(7.62cm)
Gel Elbow Pad,
Neoprene, Metric

UEP544057120
UniLink
4in(10.16cm) x
4in(10.16cm)
Gel Elbow Pad
with Neoprene
cover and
Metric Threads

UEP53005712L
UniLink Left
3in(7.62cm) x
10in(25.40cm)
Elbow Gel Pad
with Neoprene
cover and
Metric threads

UEP53005712R
UniLink Right
3in(7.62cm) x
10in(25.40cm)
Elbow Gel Pad
with Neoprene
cover and
Metric threads



CONTENTS

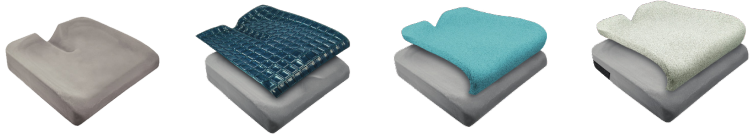
- 34 End to End Cushion Solutions
- 36 Skin Protection
- 44 Back Supports
- 46 Back Cushions






Stealth Cushions

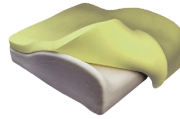
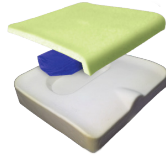
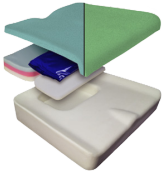






END TO END CUSHION SOLUTIONS



	Simplicity G	Glacial SP	Zen SP	Premiere P
DESCRIPTION	 High-density foam Stealth-Tek cover standard More contour to sacral/coccyx relief well	 New SIM G base, fluid resistant overlay, top and sides TPU heat-sealed, low profile, lightweight cooling gel topper	 New SIM G base, SunMate FRG XXSoft (blue topper), low profile, lightweight	 Gray X-Soft SunMate FRG foam topper, high density positioning wedges built in for offloading.
WEIGHT CAPACITY ²	28 stone 7 lbs (181 kg)	28 stone 7 lbs (181 kg)	28 stone 7 lbs (181 kg)	35 stone 8 lbs (226 kg)
OVERALL WEIGHT	0.9 kg	1.5 kg	1.1 kg	1.5 kg
HEIGHT	2"	2.5"	3"	3.5"
DIMENSIONS ³	10x10" up to 24x24" Odd sizes up to 21" SOF available	10x10" up to 24x24" Odd sizes from 15" up to 21"	10x10" up to 24x24" Odd sizes available SOF available	14x13" up to 22x22" Odd sizes available SOF available

- 1) CoolCore® is standard on all cushions except the Simplicity G.
- 2) Maximum user weight varies with size. Please refer to order forms for further information.
- 3) Special order sizes available for all cushions except the Glacial SP. Contact sales for additional assistance.



Spectrum® Foam/Gel SPP	Solution® SPP	TRU-Comfort 2 SPP	Essence SPP
			
SunMate FRG foam top (SunMate FRG XXSoft (blue); Medsoft (green)) with multi-layered foam insert or twin cell ultra-lightweight viscous gel insert in ischial well, sacral relief	Standard viscoelastic foam top with twin cell aqueous viscous gel (heavier gel) insert in ischial well, mid-level contour	Multi-layered foam Deep contour, CoolCore® cushion cover has "pockets" on sides	Low profile Tru-Comfort 2, lateral and pre-ischial shelf Contoured, HD molded foam base, coccyx and sacral relief
Foam: 46 stone 4 lbs (294 kg) Gel: 39 stone 3 lbs (249 kg)	35 stone 8 lbs (226 kg)	32 stone 1 lbs (204 kg)	32 stone 1 lbs (204 kg)
Foam: 1.3 kg Gel: 1.5 kg	2.4 kg	1.8 kg	1.5 kg - 2.2 kg
3"	3"	4.5"	3.5"
Foam: 14x18" up to 32x28" Gel: 14x18" up to 24x26"	10x10" up to 24x24"	14x14" up to 24x24"	15x15" up to 22x24"
Odd sizes in 17" and 19"	Odd sizes in 17" and 19"	Odd sizes in 17" and 19"	Odd sizes in 15"
SOF available	SOF available	SOF available	SOF available

TPU - Thermoplastic polyurethane (TPU) is a melt-processable thermoplastic elastomer with high durability and flexibility. It has properties between the characteristics of plastic and rubber. Thanks to its thermoplastic nature, it has several benefits over other commonly used elastomers.

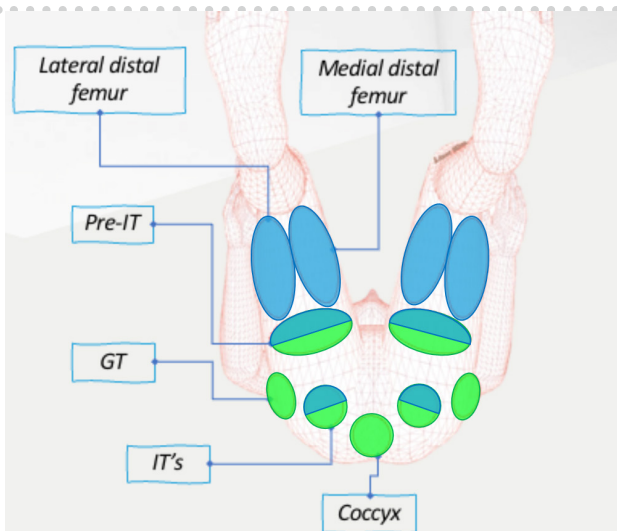
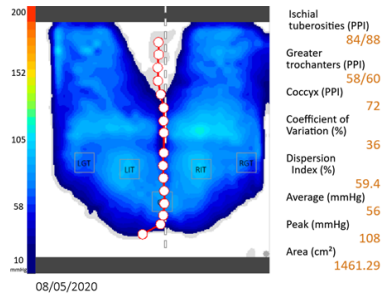
FRG Foam - Sunmate is a technically advanced memory foam with unique qualities; it is high load bearing, light in weight and temperature stable whilst remaining soft to the touch. It gently forms around the bony prominences to cushion, protect and support



SKIN PROTECTION

SPECTRUM® FOAM SPP

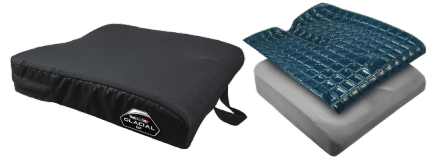
- Lateral and Pre-Ischial Shelf Contoured, High Density Moulded Foam Base
- Multi-Layered, Viscoelastic Foam Insert Under At-Risk Bony Areas
- Coolcore Technology Cover Standard
- Size 16in / 32in W x 16in / 28in D
- Custom sizes also available



Area's on the cushion designed to impact tissue loading

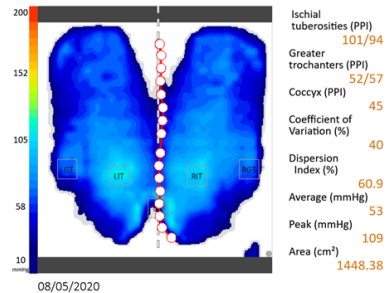
GLACIAL SP

- Contoured, High Density Moulded Foam Base
- Soft Gel Top Layer
- Coccyx and Sacral Relief
- CoolCore® Technology Cover (Standard)



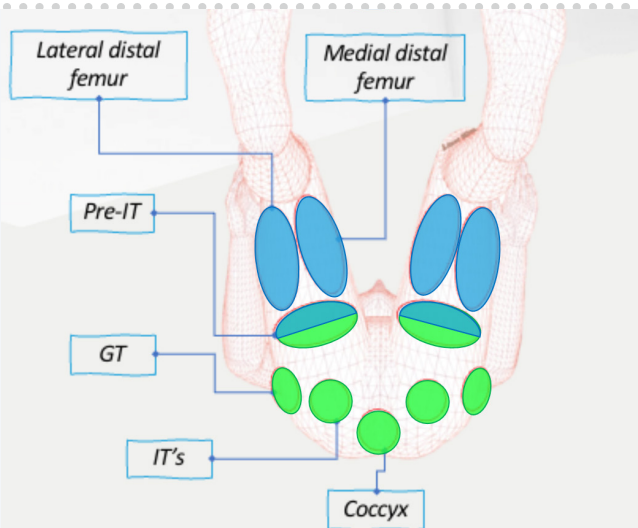
Options available:

- 4-Way Stretch Poly or Urethane Liner
- Mesh or Stealth Tek Cover
- ABS or ACM Solid Seat Insert



Blue Zones

Area's on the cushion designed to influence posture and stability

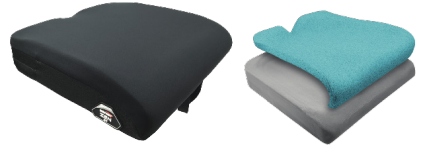




SKIN PROTECTION

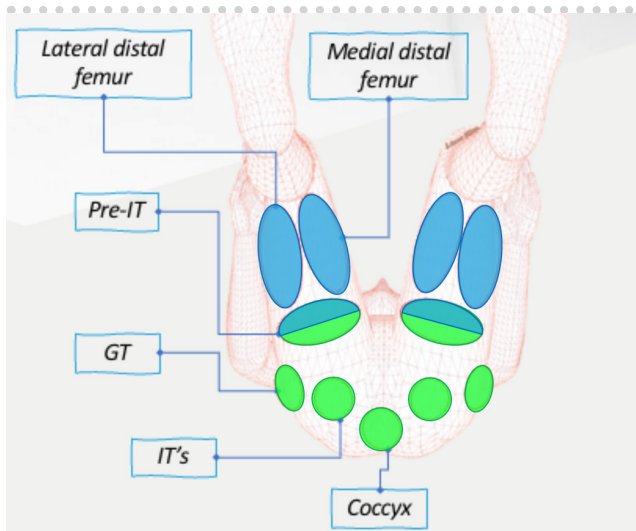
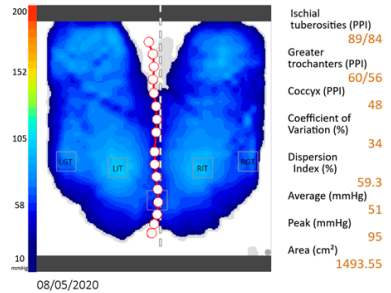
ZEN SP

- Slightly Contoured, high-density moulded foam base
- FRG Extra Extra Soft foam topper for skin protection
- Coccyx and Sacral Relief
- CoolCore® Technology Cover (Standard)



Options available:

- 4-Way Stretch Poly or Urethane Liner
- Mesh or Stealth Tek Cover
- ABS or ACM Solid Seat Insert



Area's on the cushion designed to impact tissue loading

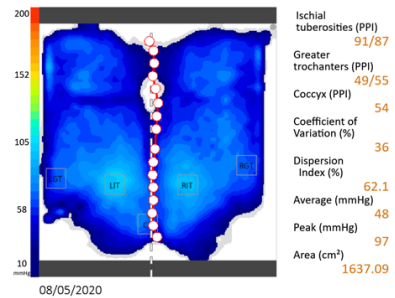
PREMIERE® P

- Lateral and pre-ischial shelf contoured, high-density specially formulated moulded foam base.
- FRG SunMate® is an all natural flame retardant material.
- Coccyx and Sacral Relief
- Standard Visco topper (exclusive FRG Sunmate) for added comfort
- CoolCore® Technology Cover (Standard)



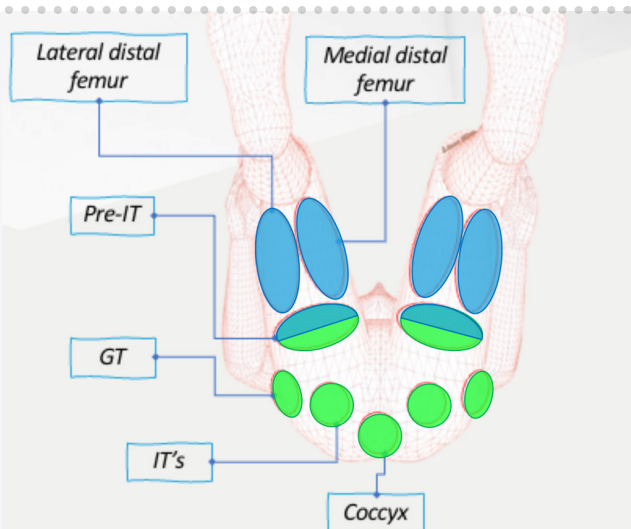
Options available:

- 4-Way Stretch Poly or Urethane Liner
- Mesh or Stealth Tek Cover
- ABS or ACM Solid Seat Insert



Blue Zones

Area's on the cushion designed to influence posture and stability





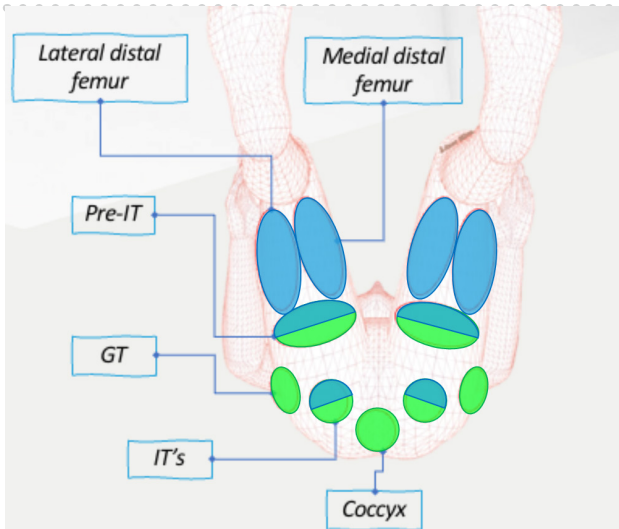
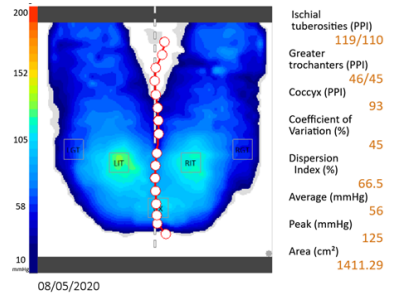
SKIN PROTECTION

SPECTRUM® GEL SPP

- Lateral and Pre-Ischial Shelf Contoured, High Density Moulded Foam Base
- Twin-Cell, Lightweight Fluid Insert Under At-Risk Bony Areas
- Coolcore Technology Cover Standard
- Size 14in/24in W x 16in/24in D
- Custom sizes also available

Options available:

- Urethane Liner for Incontinence 4-Way Stretch Poly Liner
- Mesh or Stealth Tek Cover



Green Zones

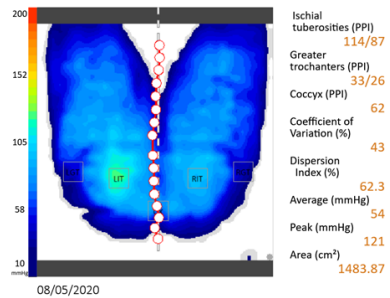
Area's on the cushion designed to impact tissue loading

SOLUTION® SPP

- Lateral and Pre-Ischial Shelf Contoured, High Density Moulded Foam Base
- Twin-Cell, Aqueous Gel Insert Under At-Risk Bony Areas
- Coolcore Technology Cover Standard
- Urethane Liner for Incontinence
- Size 14in/24in W x 14in/24in D
- Custom sizes also available

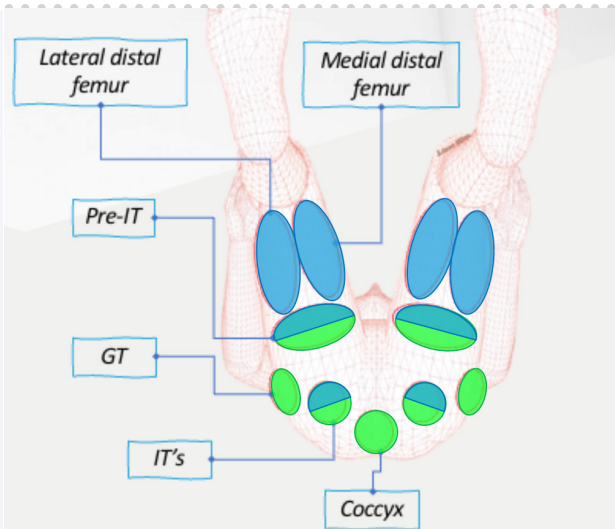
Options available:

- Mesh or Stealth Tek Cover



Blue Zones

Area's on the cushion designed to influence posture and stability





SKIN PROTECTION

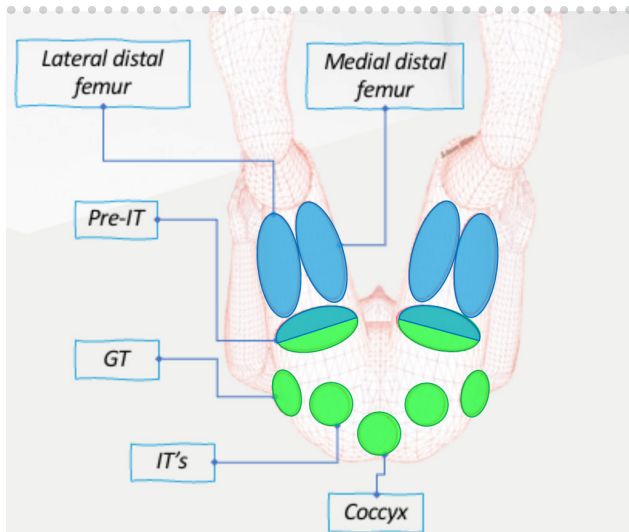
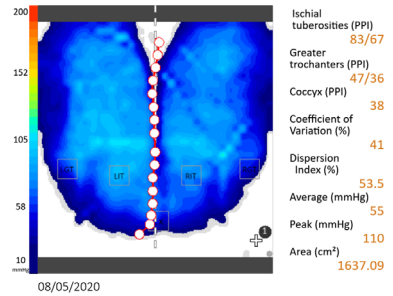
TRU-COMFORT® 2 SPP

- Deep Contoured, High Density Moulded Foam Base
- Coolcore Technology Cover Standard
- Size 16x22in W, 14x24in D
- Custom sizes also available
- Easy-Pull Rubber Loop Zipper Handles - Both Sides



Options available:

- 4-Way Stretch Poly Liner



Area's on the cushion designed to impact tissue loading

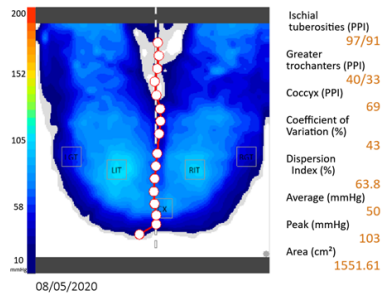
ESSENCE SPP

- Deep Contoured, High Density Moulded Foam Base
- Coolcore Technology Cover Standard
- Size 16x 22in W, 14x24in D
- Custom sizes also available



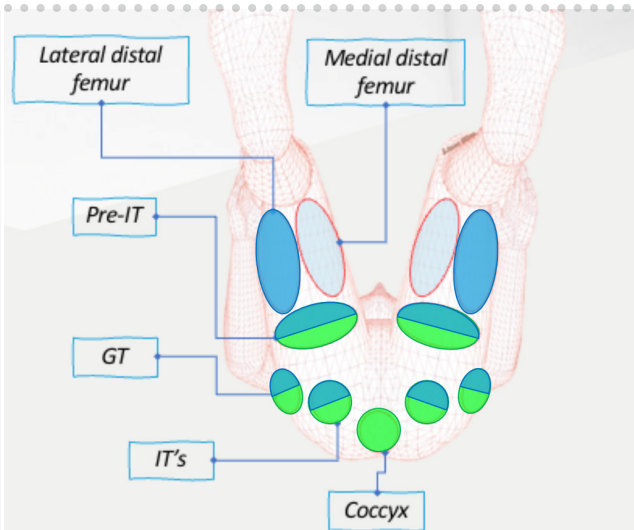
Options available:

- 4-Way Stretch Poly Liner



Blue Zones

Area's on the cushion designed to influence posture and stability





BACK POSITIONS

T

True

F

Foam

B

Back

TFB Contour Style will be available in:

Active

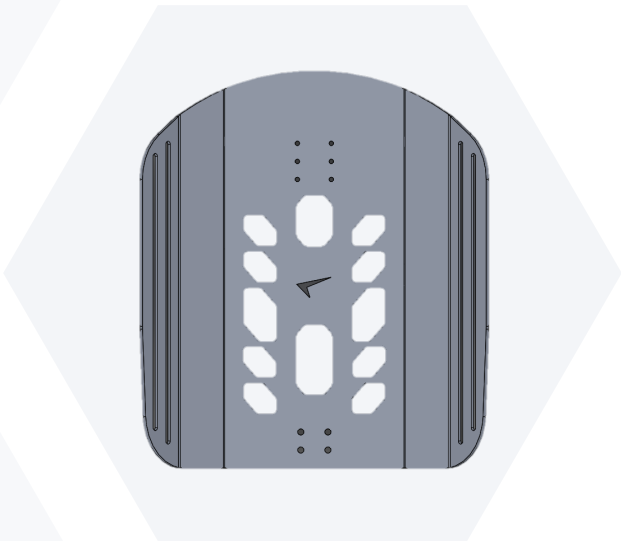
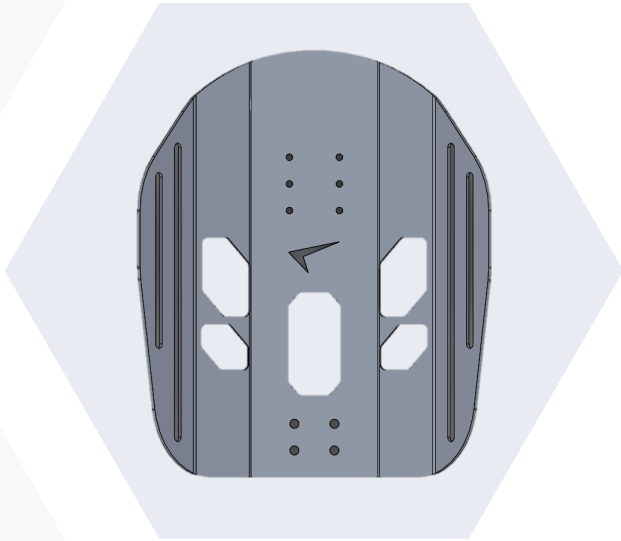
Deep

**Extra
Deep**

Cut out's and slots will be similar in design & function to TFB Rectangle and I-Style.

Contour has extra head-support holes!

Top edge shape will be the same rounded contour for every size.





BACK CUSHIONS

Active contour is the base shell for all depths.
Active will include multiple bends.

Active Contour

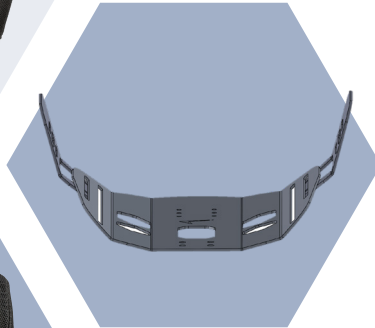
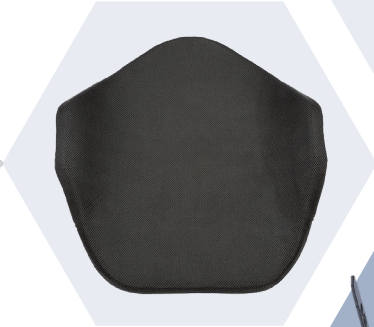
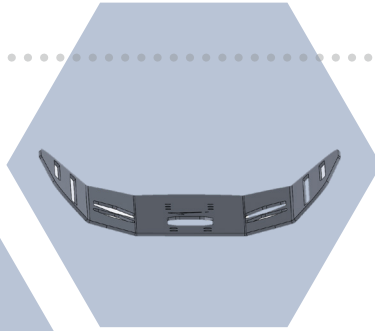
Active will include multiple bends.
2.5in (6.35cm) deep
No lateral or contour supports

Deep Contour

4in (10.16cm) deep
1.5 inch (3.81cm) lateral supports
with separate pads & cover.

Extra Deep Contour

6in (15.24cm) deep
3.5in (8.89cm) lateral support
with separate pads & cover.





CONTENTS

50 i-Drive® Control Harness

Mounting



MOUNTING

i-Drive® CONTROL HARNESS

The i-Drive Control Harness offers height, depth, and angle adjustments that will allow the joysticks to be unmanipulated to the best customized positioning solution for the end user.

With the inclusion of an integrated padded and adjustable i-Fit™ Body Securement Belt, you can be confident in consistent positioning to the facial area.



FEATURES

Highly Adjustable

An orbital compression mount and Stealth's proven highly adjustable, link style hardware, along with the addition of the track system allows for unmatched targeted positioning. This will implement the most optimal driving experience for the user.



Infinite Positioning

With infinite positioning possibilities as well as a variety of switch mounting options that will attach to the collar, the Stealth i-Drive Control Harness is the RIGHT choice for any lip, cheek, or chin driver!

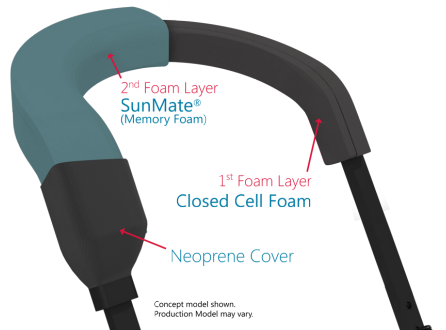


Reliable

The quick release, swing away, padded collar allows for the ability to remove the device from the right or the left side. The removable collar design also allows height adjustability on the collar frame independent of the adjustable link hardware.

Comfortable

The double padded collar consists of Closed Cell and SunMate® foams. SunMate foam was originally designed for the NASA space program and provides a gentle touch for extended periods of time.





SOLUTIONS FOR LIFE

When Stealth Products was first introduced back in 1999, its only product was a sophisticated head positioning system well ahead of its years; the Ultra QCR.

In the world of complex rehab, each individual presents their unique challenges for support and positioning due to the vast number of medical conditions and injuries.

With a wide range of products designed to solve any control or positioning puzzle, Stealth Products has distinguished itself from the rest of the pack as the leader in posterior head support and positioning.



B | E | S
HEALTHCARE

0117 966 6761
info@beshealthcare.net
www.beshealthcare.net

